

SPARE PART CATALOG

F5

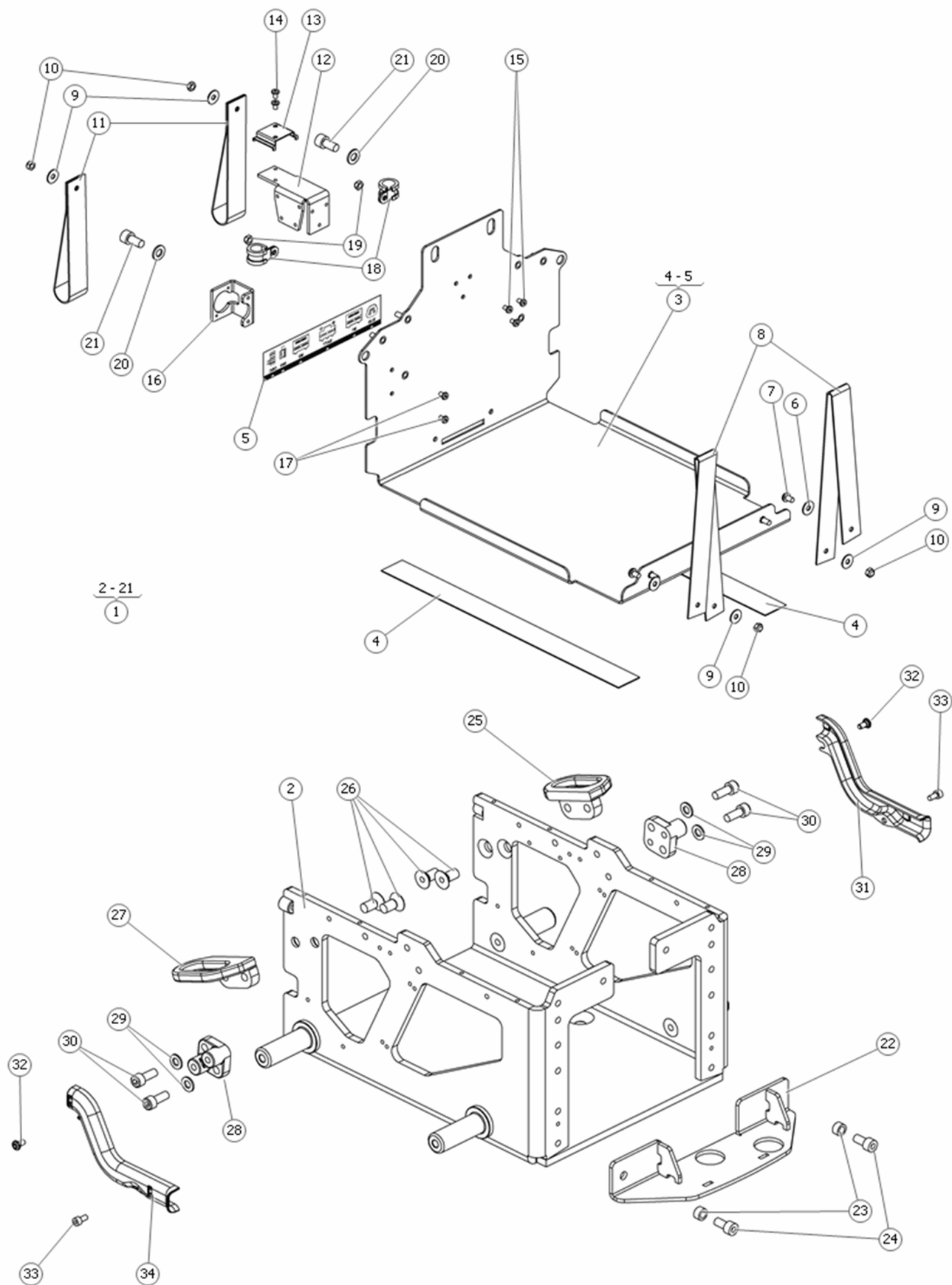
Permobil power wheelchair

permobil

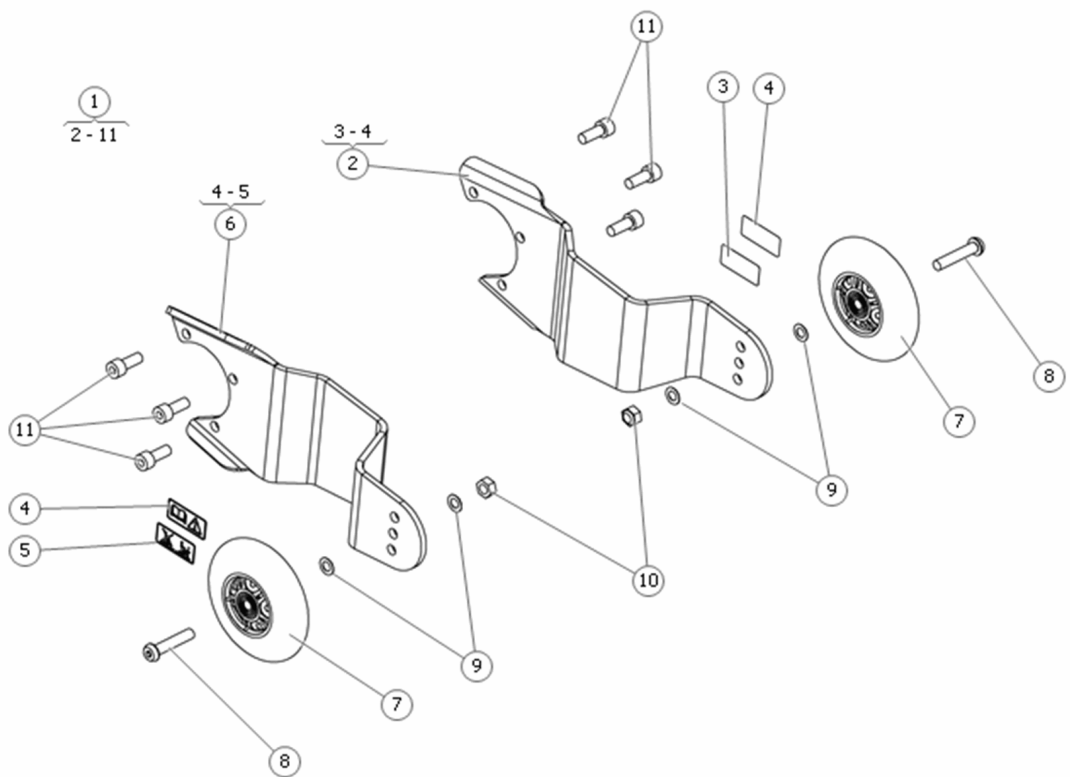
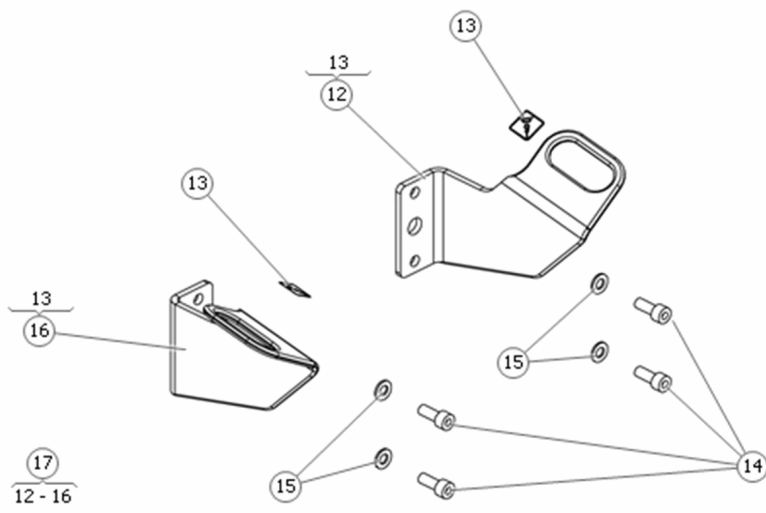
Contents

Chassis.....
Support wheels.....
Driving unit and suspension front left
Wheel suspension rear left.....
Driving unit and suspension front right
Wheel suspension rear right.....
Wheels.....
Seat elevator AP-lift.....
Covers
Electronics R-net
Lights.....
Ordering Information.....
Contact info.

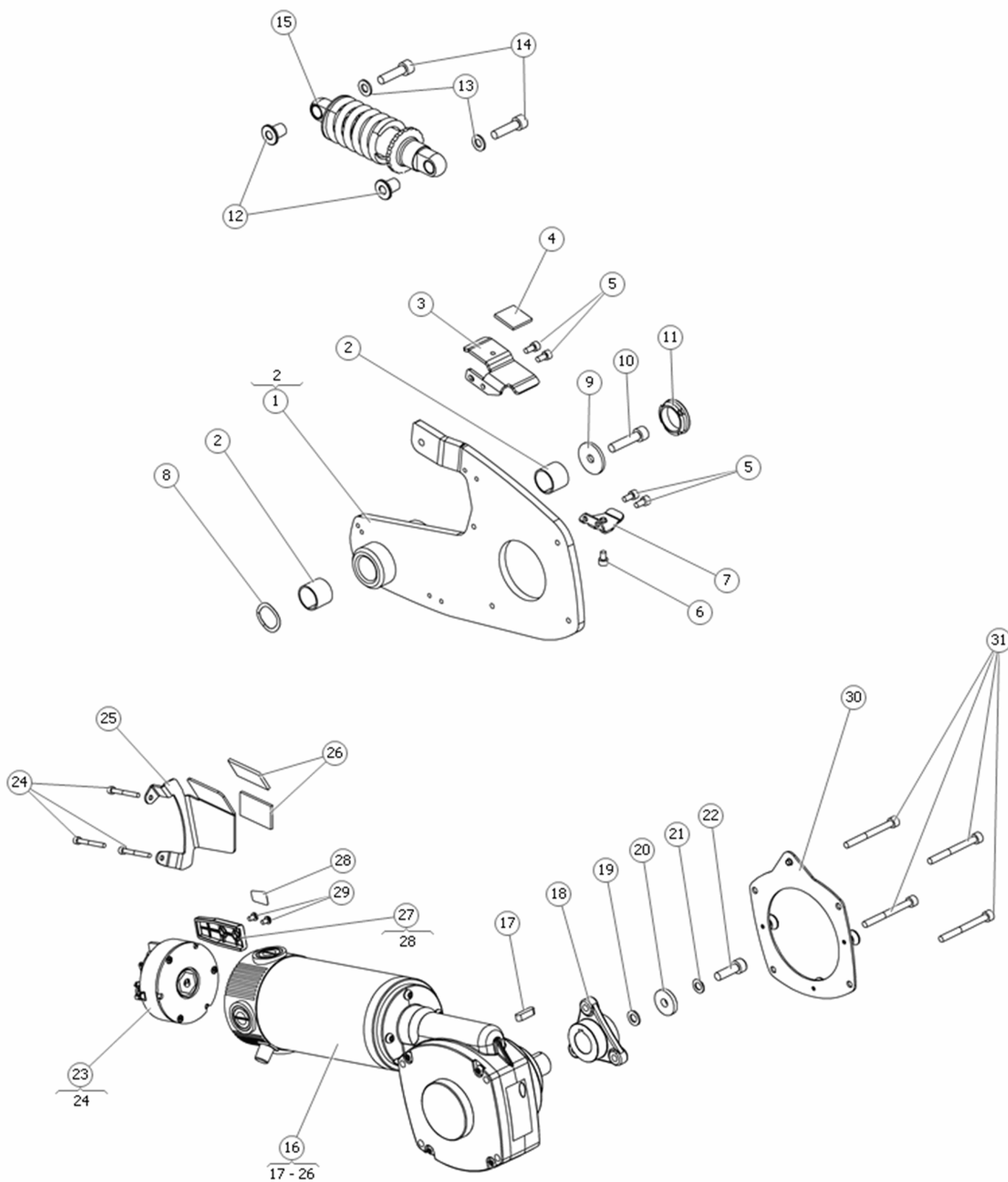
Produced and published by Permobil AB, Sweden
Release date 2015-03-01
PAB: 1290-1



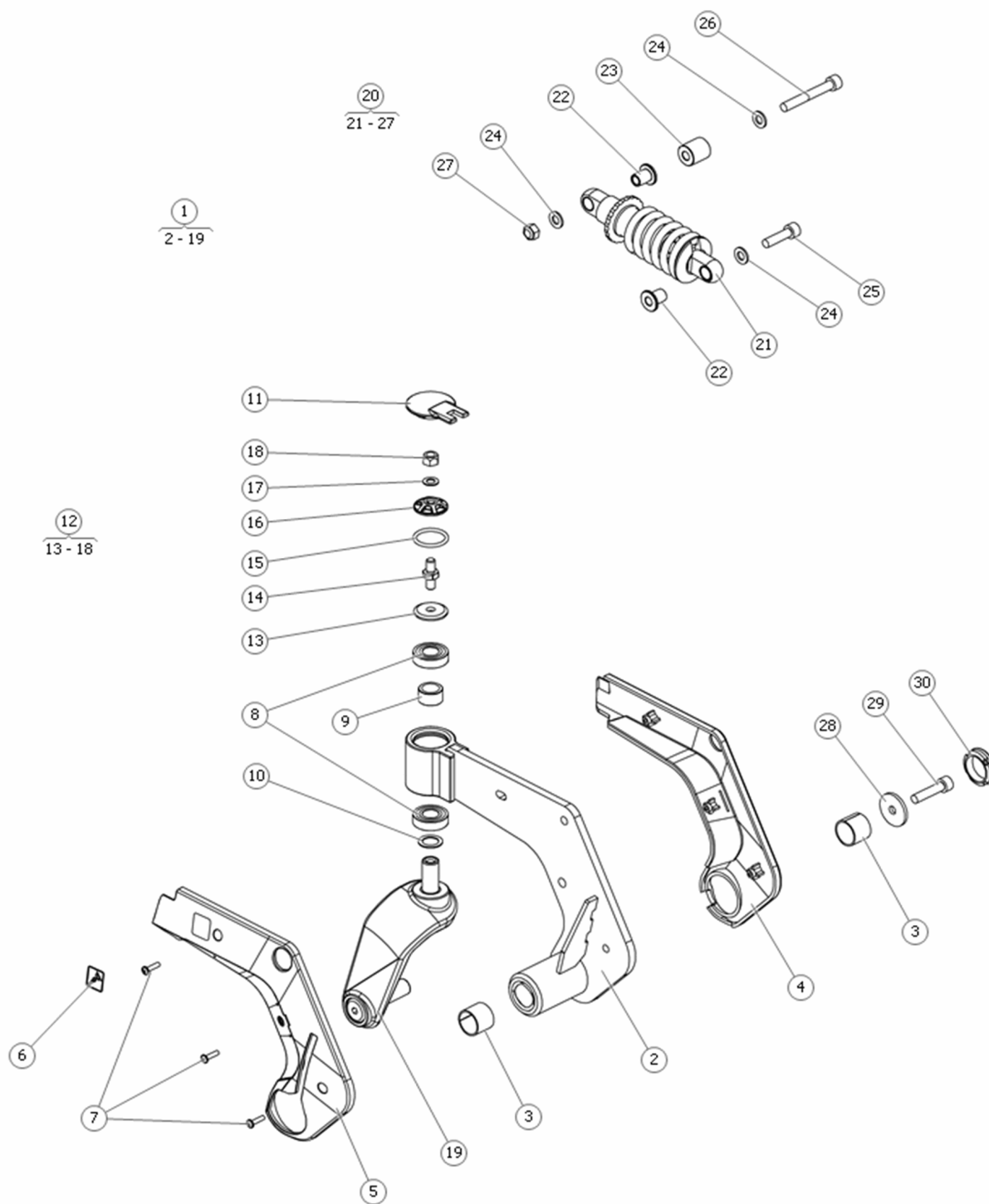
Pos	Qty	Stock Code	Description	Remark
1	1	323170	CHASSI BOX	
2	1	1830710	BOX	
3	1	323307	BATTERY BOX	
4	1	323462	SLIDE TAPE L=340	
5	1	1831392	STICKER Power connections	
6	1	612857-99-0	WASHER 5,3x15x1 FZB ISO 7093-1 200HV	
7	1	1830763	SCREW ISO 7380 M5x8 Fe/Zn L.C DIN 267-28	
8	1	1830716	STRAP BATTERY STOP	
9	1	612857-99-0	WASHER 5,3x15x1 FZB ISO 7093-1 200HV	
10	1	600226-99-0	LOCK NUT M5 FZB *	
11	1	1830717	STRAP BATTERY SLED	
12	1	323399	BRACKET	
13	1	323400	BRACKET	
14	1	1827754	SCREW ISO 7380 M4x6 Fe/Zn	
15	1	1827754	SCREW ISO 7380 M4x6 Fe/Zn	
16	1	323398	BRACKET	
17	1	1827754	SCREW ISO 7380 M4x6 Fe/Zn	
18	1	1830724	CABLE CLIP Ø13	
19	1	600226-99-0	LOCK NUT M5 FZB *	
20	1	600239-99-0	WASH ISO 7089 8.4x16x1.6 Fe/Zn	
21	1	600590-99-0	BOLT MC6S 8x 16 fzb *	
22	1	1830747	CONSOLE	
23	1	324728	SPACER	
24	1	600203-99-0	BOLT MC6S 8x 20 fzb *	
25	1	324248	HOOK TIE DOWN REAR LEFT	
26	1	614660	SCREW ISO 10642 M10x20 Fe/Zn	
27	1	324249	HOOK TIE DOWN REAR RIGHT	
28	1	322897	BRACKET	
29	1	600239-99-0	WASH ISO 7089 8.4x16x1.6 Fe/Zn	
30	1	613901	SCREW ISO 4762 M8x20 Fe/Zn L.CDIN 267-28	
31	1	1831400	CLIP	
32	1	325109	SCREW	
33	1	600189-99-0	BOLT MC6S 5x10 fzb *	
34	1	1831401	CLIP	



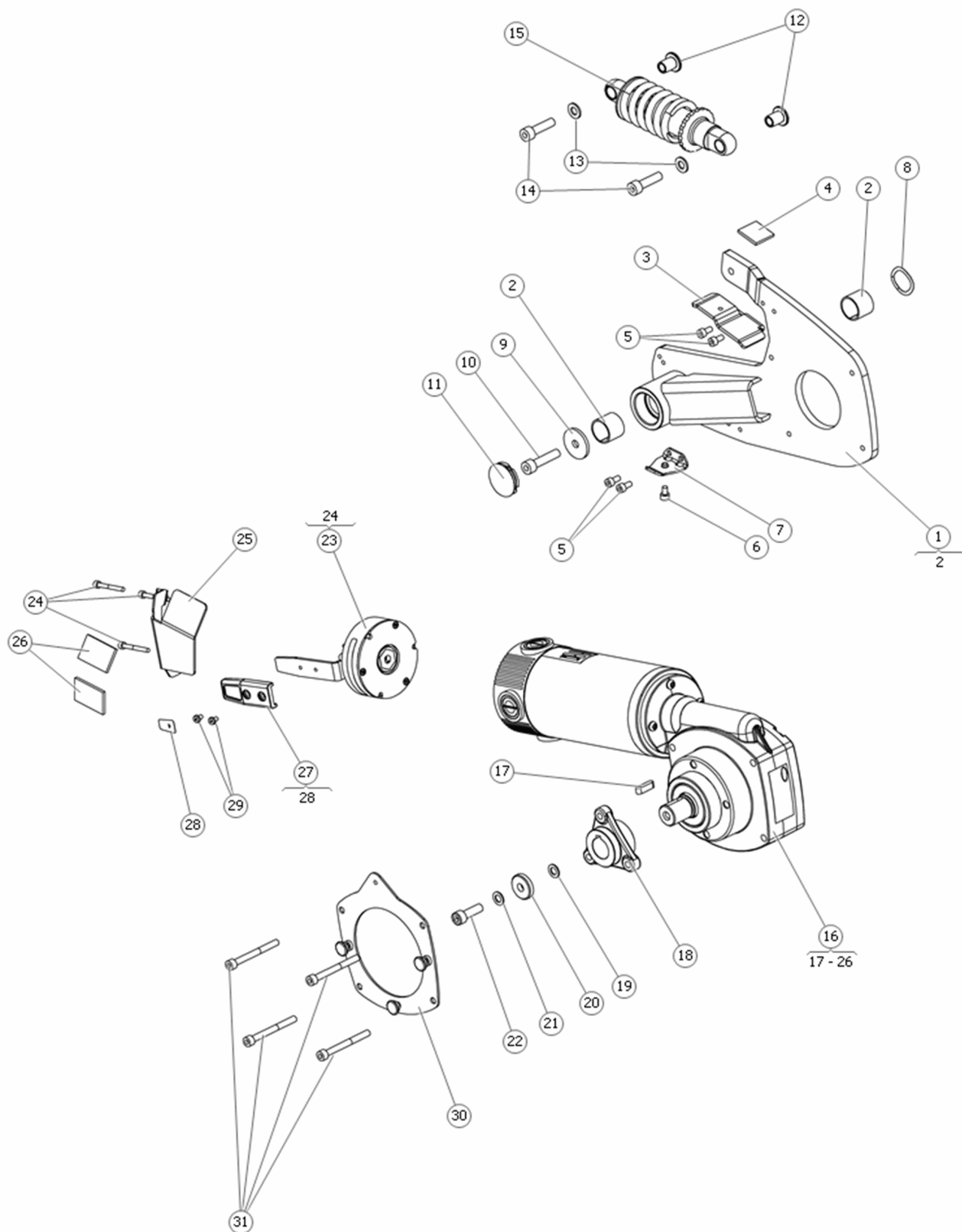
Pos	Qty	Stock Code	Description	Remark
1	1	1830752	SUPPORT WHEEL	
2	1	1831663	BRACKET SUPPORT WHEEL LEFT	
3	1	1831395	STICKER SUPPORT WHEELS	
4	1	1831394	STICKER READ INSTRUCTIONS	
5	1	1831396	STICKER SUPPORT WHEELS	
6	1	1831664	BRACKET SUPPORT WHEEL RIGHT	
7	1	1822017	WHEEL Ø100x24	
8	1	613114-99-0	SCREW M8x40 10.9 Fe/Zn 5 C1 HEX BUTTON HEAD	
9	1	612531-99-0	SPACER DB 8x14x0,5 DIN 988 A2	
10	1	600228-99-0	LOCK NUT M8 FZB *	
11	1	600203-99-0	BOLT MC6S 8x 20 fzb *	
12	1	1831742	BRACKET TIE-DOWN	
13	1	1831397	STICKER TIEDOWN	
14	1	600203-99-0	BOLT MC6S 8x 20 fzb *	
15	1	600239-99-0	WASH ISO 7089 8.4x16x1.6 Fe/Zn	
16	1	1831743	BRACKET TIE-DOWN	
17	1	1831238	TIE-DOWN KIT FRONT	



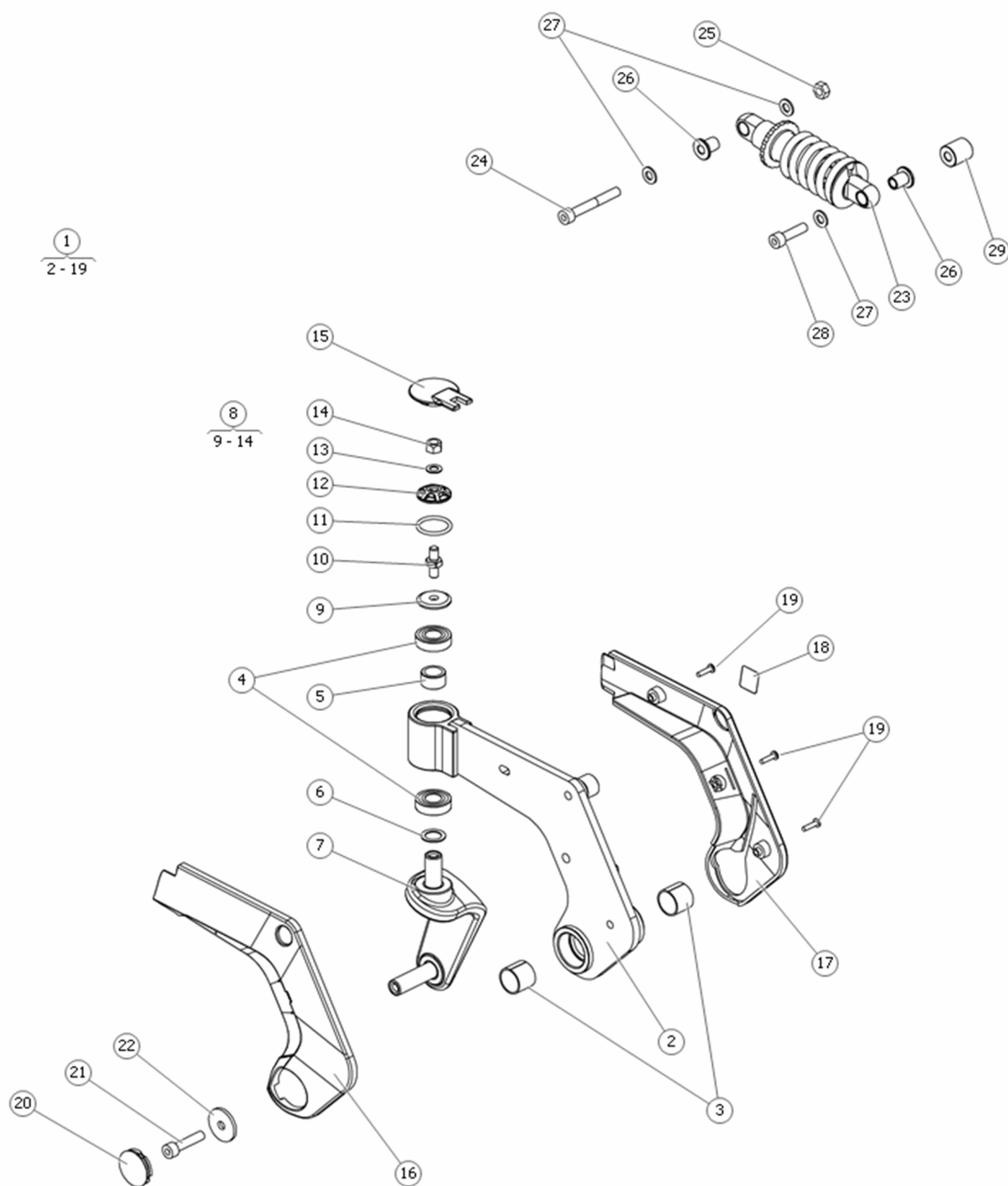
Pos	Qty	Stock Code	Description	Remark
1	1	1831187	SWING ARM FRONT LEFT	
2	1	612745-99-0	SLIDE BEARING 22/25x20SBT	
3	1	325049	BRACKET	
4	1	325046	RECLOSABLE FASTENER 25 mm ADHESIVE	
5	1	600189-99-0	BOLT MC6S 5x10 fzb *	
6	1	600188-99-0	BOLT MC6S 5x 8 fzb	
7	1	323548	BRACKET	
8	1	1830715	SPRING DISC WASHER DIN 17222 22.5/29.7x0.3	
9	1	316714-99-0	WASHER 32x8,1x3	
10	1	1830714	SCREW ISO 4762 M8x35 Fe/Zn / L.C. DIN 267-28	
11	1	301146-00-0	PLAST PLUG WHEEL CH,HD,2k CHP+ M90,T X90 HEXIIIIP+	
12	1	1831707	SOCKET	
13	1	600239-99-0	WASH ISO 7089 8.4x16x1.6 Fe/Zn	
14	1	601075-99-0	BOLT ESLOK 8x30 fzb DR.WH MI,2 MA,II M90,T CH	
15	1	1831706	SHOCK ABSORBER 160mm 350LBS/IN	
16	1	1830578	DRIVING UNIT LEFT	
17	1	600855-99-0	KEY 6X6X22 DRIVE SHAFT	
18	1	323404	HUB Ø22x28,5	
19	1	612902-99-0	WASH 8.4x15x1.5 PA	
20	1	612513-99-0	WASH 8.4x23x5 HB 305 YELLOW	
21	1	612531-99-0	SPACER DB 8x14x0,5 DIN 988 A2	
22	1	612512-99-0	BOLT ISO 4762 M8x25 *	
23	1	1830713	BRAKE	
24	1	602233-99-0	BOLT MC6S 4x35 BRAKE ROBASTOP	
25	1	323546	BRACKET	
26	1	323547	RECLOSABLE FASTENER 25,4 ADHESIVE	
27	1	1830712	COVER	
28	1	1831390	STICKER	
29	1	1827754	SCREW ISO 7380 M4x6 Fe/Zn	
30	1	323467	BRACKET	
31	1	601923-99-0	BOLT MC6S 6x60 fzb	



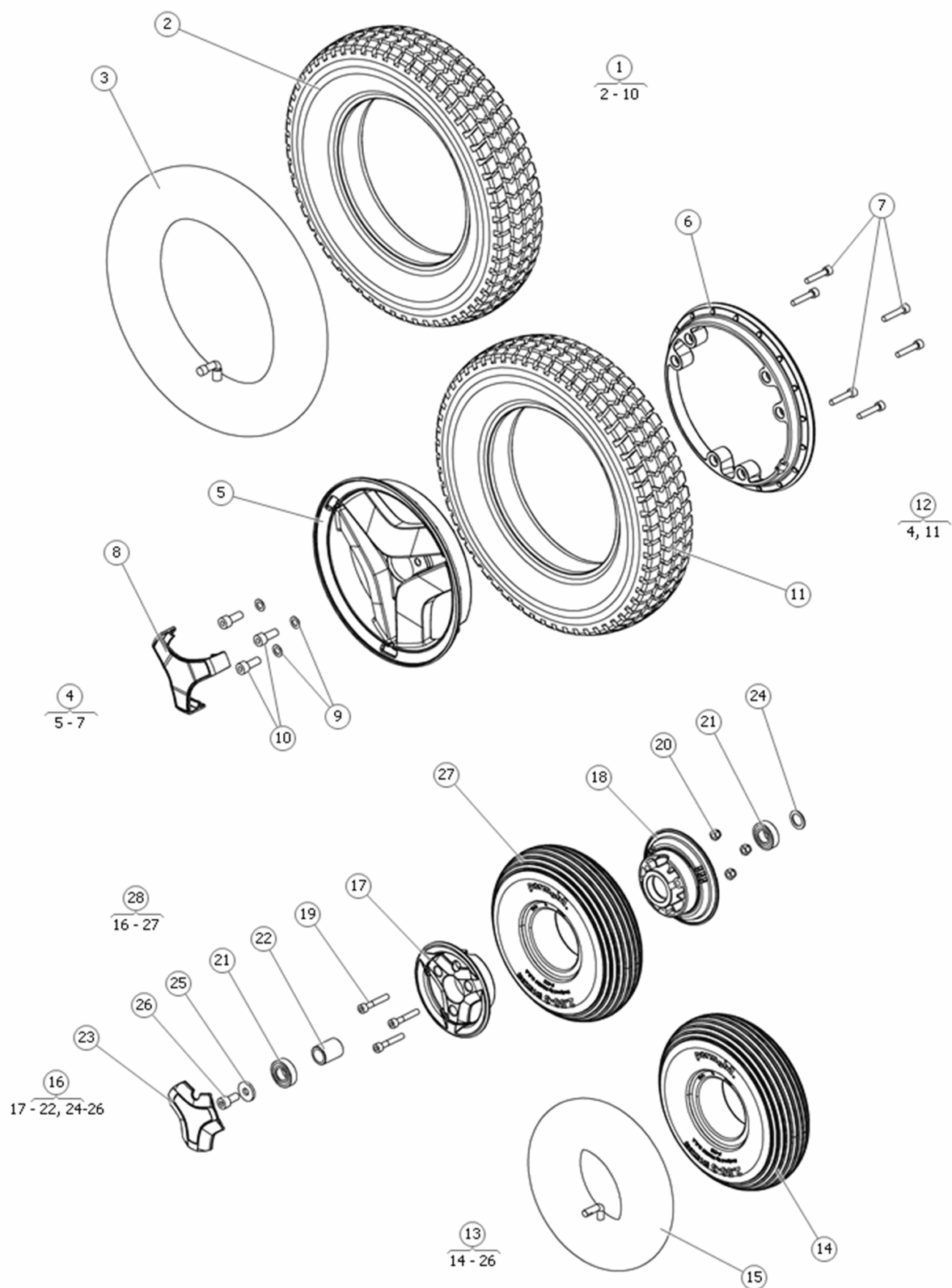
Pos	Qty	Stock Code	Description	Remark
1	1	1830753	Swing arm	
2	1	323046	SWING ARM	
3	2	612745-99-0	SLIDE BEARING 22/25x20SBT	
4	1	1831546	COVER	
5	1	1831545	COVER	
6	1	1831397	STICKER	
7	3	613078-99-0	TAP SCREW 4x16 WN 156-2 FZB REMFORM	
8	2	600752-99-0	BALL BEAR 6002-2RS1 *	
9	1	1831010	SPACER	
10	1	1828317	SHIM WASHER	
11	1	1830748	COVER	
12	1	1826690	FRICTIONS BRAKE	
13	1	322246	FRICTIONS BRAKE	
14	1	322304	FRICTIONS BRAKE	
15	1	613957-99-0	RUBBER RING 25x3 70EPDM 281	
16	1	322249	FRICTIONS BRAKE	
17	1	614614	SHIM WASHER	
18	1	614423	PREVAILING TORQUE TYPE HEXAGON NUT	
19	1	1830755	WHEEL FORK	
20	1	1830764	Shock absorber kit	
21	1	1831706	Shock absorber 160mm 350LBS/IN	
22	2	1831707	Socket shock absorber	
23	1	1831705	Spacer Ø20 L=22	
24	3	600239-99-0	WASH ISO 7089 8.4x16x1.6 Fe/Zn	
25	1	601075-99-0	BOLT ESLOK 8x30 fzb DR.WH MI,2 MA,II M90,T CH	
26	1	600719-99-0	BOLT MC6S 8x60 fzb	
27	1	600228-99-0	LOCK NUT M8 FZB *	
28	1	316714-99-0	WASHER 32x8,1x3	
29	1	1830714	Screw ISO 4762 M8x Fe/Zn	
30	1	301146-00-0	PLAST PLUG WHEEL CH,HD,2k CHP+ M90,T X90 HEXIIP+	



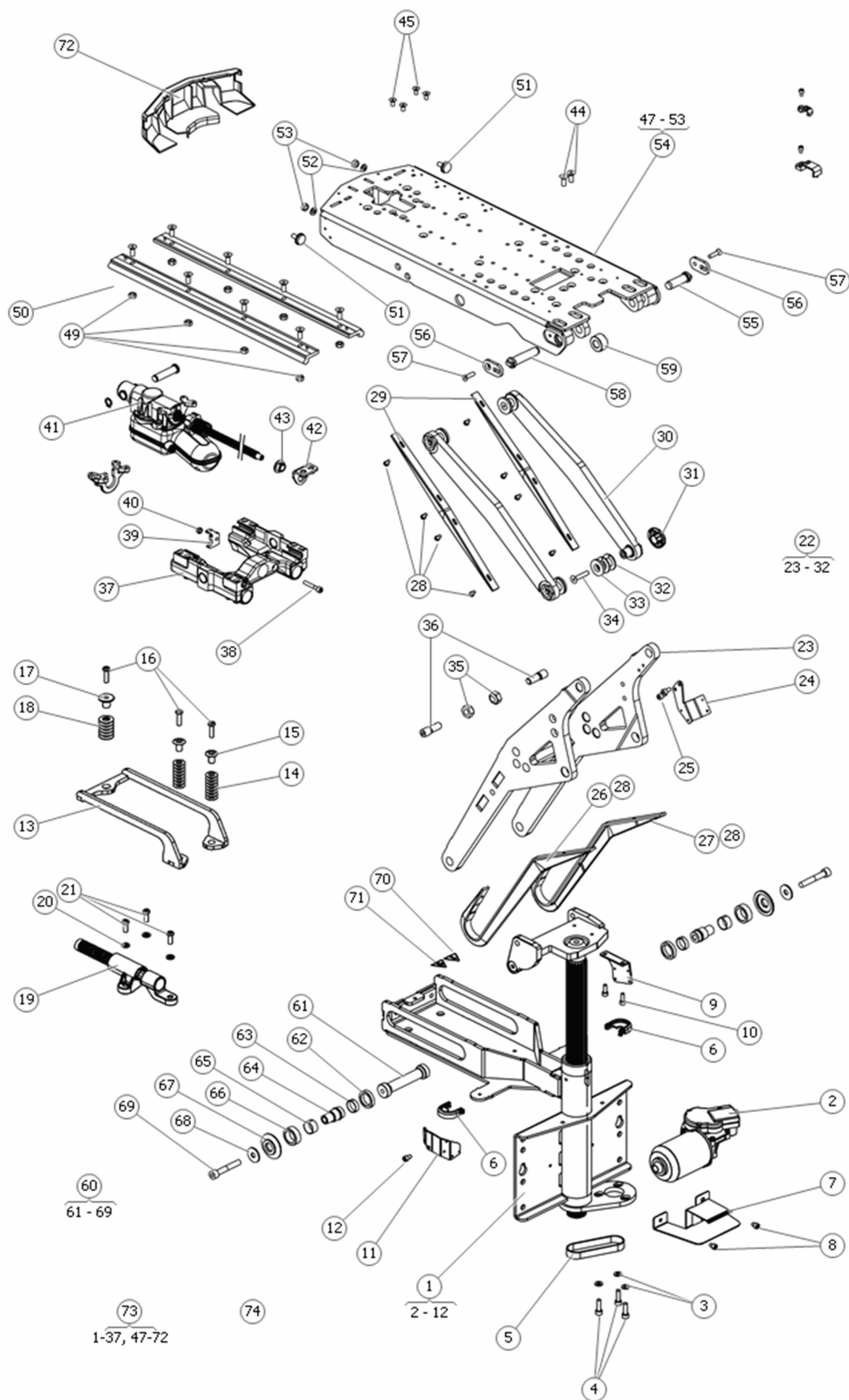
Pos	Qty	Stock Code	Description	Remark
1	1	1831188	SWING ARM FRONT RIGHT	
2	1	612745-99-0	SLIDE BEARING 22/25x20SBT	
3	1	325050	BRACKET	
4	1	325046	RECLOSABLE FASTENER 25 mm ADHESIVE	
5	1	600189-99-0	BOLT MC6S 5x10 fzb *	
6	1	600188-99-0	BOLT MC6S 5x 8 fzb	
7	1	323548	BRACKET	
8	1	1830715	SPRING DISC WASHER DIN 17222 22.5/29.7x0.3	
9	1	316714-99-0	WASHER 32x8,1x3	
10	1	1830714	SCREW ISO 4762 M8x35 Fe/Zn / L.C. DIN 267-28	
11	1	301146-00-0	PLAST PLUG WHEEL CH,HD,2k CHP+ M90,T X90 HEXIIIIP+	
12	1	1831707	SOCKET	
13	1	600239-99-0	WASH ISO 7089 8.4x16x1.6 Fe/Zn	
14	1	601075-99-0	BOLT ESLOK 8x30 fzb DR.WH MI,2 MA,II M90,T CH	
15	1	1831706	SHOCK ABSORBER 160mm 350LBS/IN	
16	1	1830579	DRIVING UNIT RIGHT	
17	1	600855-99-0	KEY 6X6X22 DRIVE SHAFT	
18	1	323404	HUB Ø22x28,5	
19	1	612902-99-0	WASH 8.4x15x1.5 PA	
20	1	612513-99-0	WASH 8.4x23x5 HB 305 YELLOW	
21	1	612531-99-0	SPACER DB 8x14x0,5 DIN 988 A2	
22	1	612512-99-0	BOLT ISO 4762 M8x25 *	
23	1	1830713	BRAKE	
24	1	602233-99-0	BOLT MC6S 4x35 BRAKE ROBASTOP	
25	1	323609	BRACKET	
26	1	323547	RECLOSABLE FASTENER 25,4 ADHESIVE	
27	1	1830712	COVER	
28	1	1831390	STICKER	
29	1	1827754	SCREW ISO 7380 M4x6 Fe/Zn	
30	1	323467	BRACKET	
31	1	601923-99-0	BOLT MC6S 6x60 fzb	



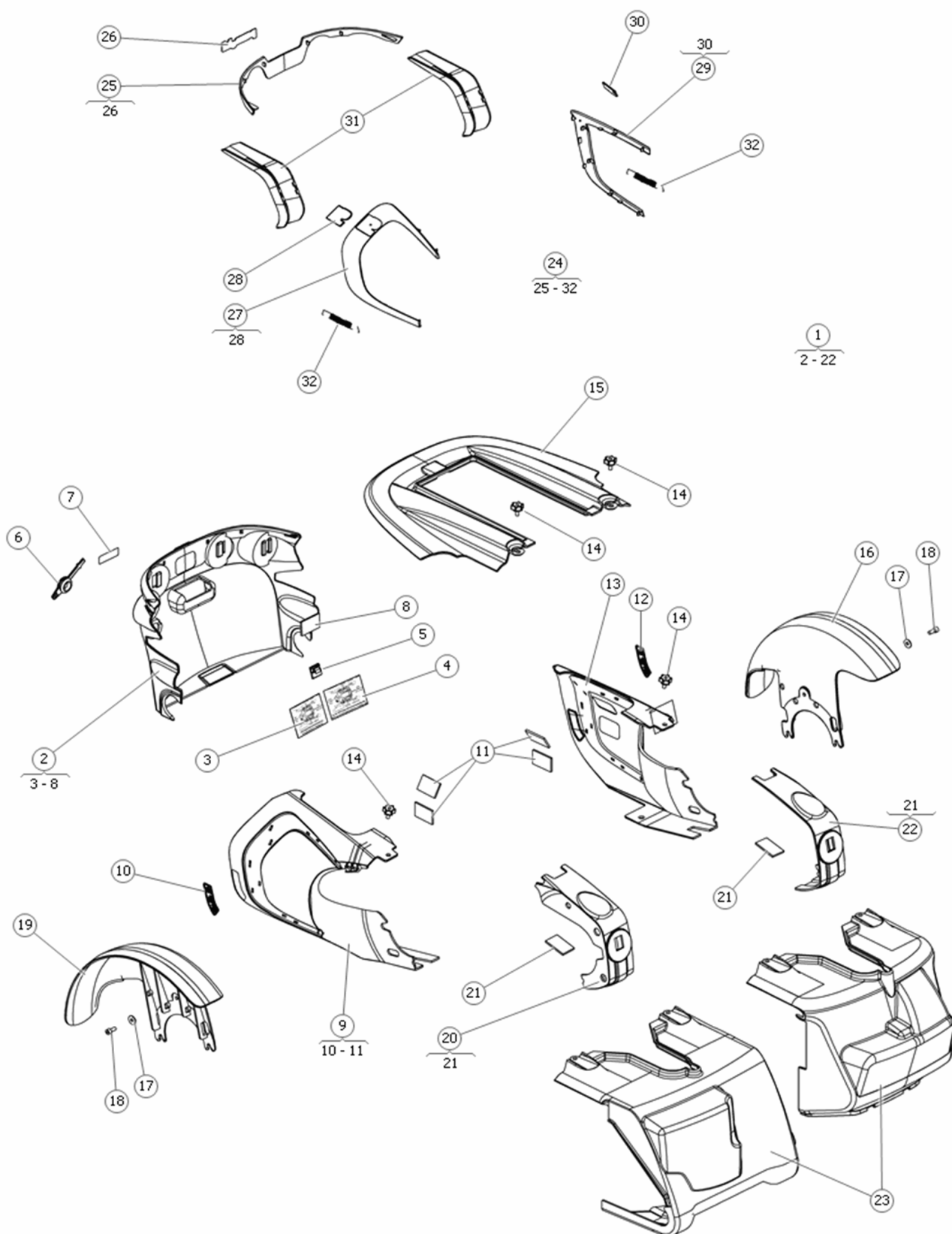
Pos	Qty	Stock Code	Description	Remark
1	1	1830754	SWING ARM REAR RIGHT Incl. Wheel fork	
2	1	323075	SWING ARM REAR RIGHT	
3	1	612745-99-0	SLIDE BEARING 22/25x20SBT	
4	1	600752-99-0	BALL BEAR 6002-2RS1 *	
5	1	1831010	SPACER Ø16xØ22x12,5	
6	1	1828317	SHIM WASHER DIN 988 DB 15x22x1	
7	1	1830756	WHEEL FORK RIGHT	
8	1	1826690	FRICTIONS BRAKE	
9	1	322246	FRICTIONS BRAKE PLATE LOWER	
10	1	322304	FRICTIONS BRAKE SHAFT	
11	1	613957-99-0	RUBBER RING 25x3 70EPDM 281	
12	1	322249	FRICTIONS BRAKE ADJUSTMENT UPPER	
13	1	614614	SHIM WASHER DIN 988 BR DB 8x14x1	
14	1	614423	NUT DIN 980V M8 Fe/Zn	
15	1	1830748	COVER REAR SWINGARM PLUG	
16	1	1831548	COVER REAR SWINGARM OUTSIDE RIGHT	
17	1	1831547	COVER REAR SWINGARM INSIDE RIGHT W STICKER	
18	1	1831397	STICKER TIEDOWN	
19	1	613078-99-0	TAP SCREW 4x16 WN 156-2 FZB REMFORM	
20	1	301146-00-0	PLAST PLUG WHEEL CH,HD,2k CHP+ M90,T X90 HEXIIP+	
21	1	1830714	SCREW ISO 4762 M8x35 Fe/Zn / L.C. DIN 267-28	
22	1	316714-99-0	WASHER 32x8,1x3	
23	1	1831706	SHOCK ABSORBER 160mm 350LBS/IN	
24	1	600719-99-0	BOLT MC6S 8x60 fzb	
25	1	600228-99-0	LOCK NUT M8 FZB *	
26	1	1831707	SOCKET SHOCK ABSORBER	
27	1	600239-99-0	WASH ISO 7089 8.4x16x1.6 Fe/Zn	
28	1	601075-99-0	BOLT ESLOK 8x30 fzb DR.WH MI,2 MA,II M90,T CH	
29	1	1831705	SPACER	



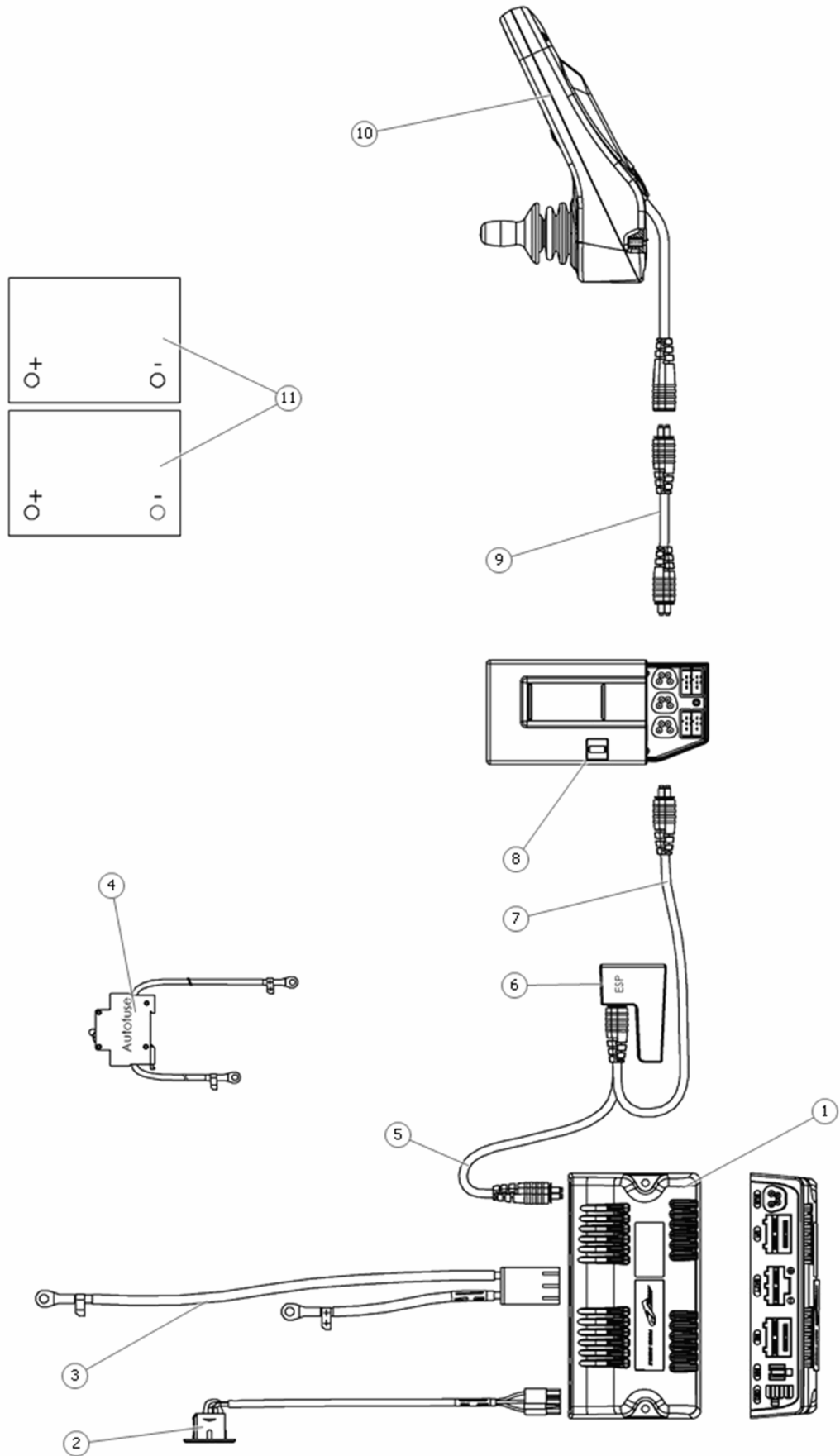
Pos	Qty	Stock Code	Description	Remark
1	1	1830891	Wheel air 3,00-8"	With gray tire
1	1	1830892	Wheel air 3,00-8"	With black tire
2	1	1824843	Tire 3,00 x 8"	Tire color: Gray
2	1	1830765	Tire 3.00 x 8"	Tire color: Black
3	1	600770-99-0	Tube 3,00-8" front	
4	1	1830991	Rim 8" 3-spoke 3-bolt	
5	1	323627	Rim half outer	
6	1	323626	Rim half inner	
7	1	614654	Screw ISO 4762 M6x30 Fe/Zn L.C	
8	1	1830781	Hub cap	Incl. reflector sticker
9	1	612531-99-0	Washer DIN 988 DB 8x14x0,5 stainless	
10	1	600203-99-0	Screw ISO 4762 M8x20 Fe/Zn	
11	1	1822361	Tire 3,00x8" solid	Tire color: gray
11	1	1830767	Tire 3,00 x 8" solid	Tire color: Black
11	1	1831685	Tire 3,00 x 8" solid agressiv	Tire color: Black
12	1	1830893	Wheel solid 3,00-8"	With gray tire
12	1	1830894	Wheel solid 3,00-8"	With black tire
12	1	1831687	Wheel solid 3,00-8" aggressive	With black tire
13	1	1830777	Wheel air 210x65	Tire color: Gray
13	1	1830778	Wheel air 210 x 65	Tire color: Black
14	1	1830790	Tire 210 x 65	Tire color: Black
14	1	602569-08-0	Tire 210 x 65	Tire color: Gray
15	1	602568-99-0	Tube 210 x 65 rear	
16	1	1830997	Rim 210 x 65	
17	1	323632	Rim half outer	
18	1	323631	Rim half inner	
19	1	601333-99-0	Screw ISO 4762 M6x35 Fe/Zn	
20	1	602799-99-0	Nut ISO 7040 M6 Fe/Zn	
21	1	600752-99-0	Ball bearing 6002-2RS1	
22	1	316386-99-0	Spacer	
23	1	1830770	Hub cap	
24	1	1828317	Shim washer DIN 988 DB 15x22x1	
25	1	305390-99-0	Washer 8,5x23x3	
26	1	613088-99-0	Screw ISO 4762 M8x16 Fe/Zn	
27	1	1830791	Tire 210 x 65 Solid	Tire color: Black
27	1	1831686	Tire 210 x 65 Solid agressiv	Tire color: Black
27	1	612397-08-0	Tire 210 x 65 Solid	Tire color: Gray
28	1	1830779	Wheel 210 x 65 Solid	Tire color: Gray
28	1	1830780	Wheel 210 x 65 Solid	Tire color: Black
28	1	1831688	Wheel 210 x 65 Solid aggressive	Tire color: Black



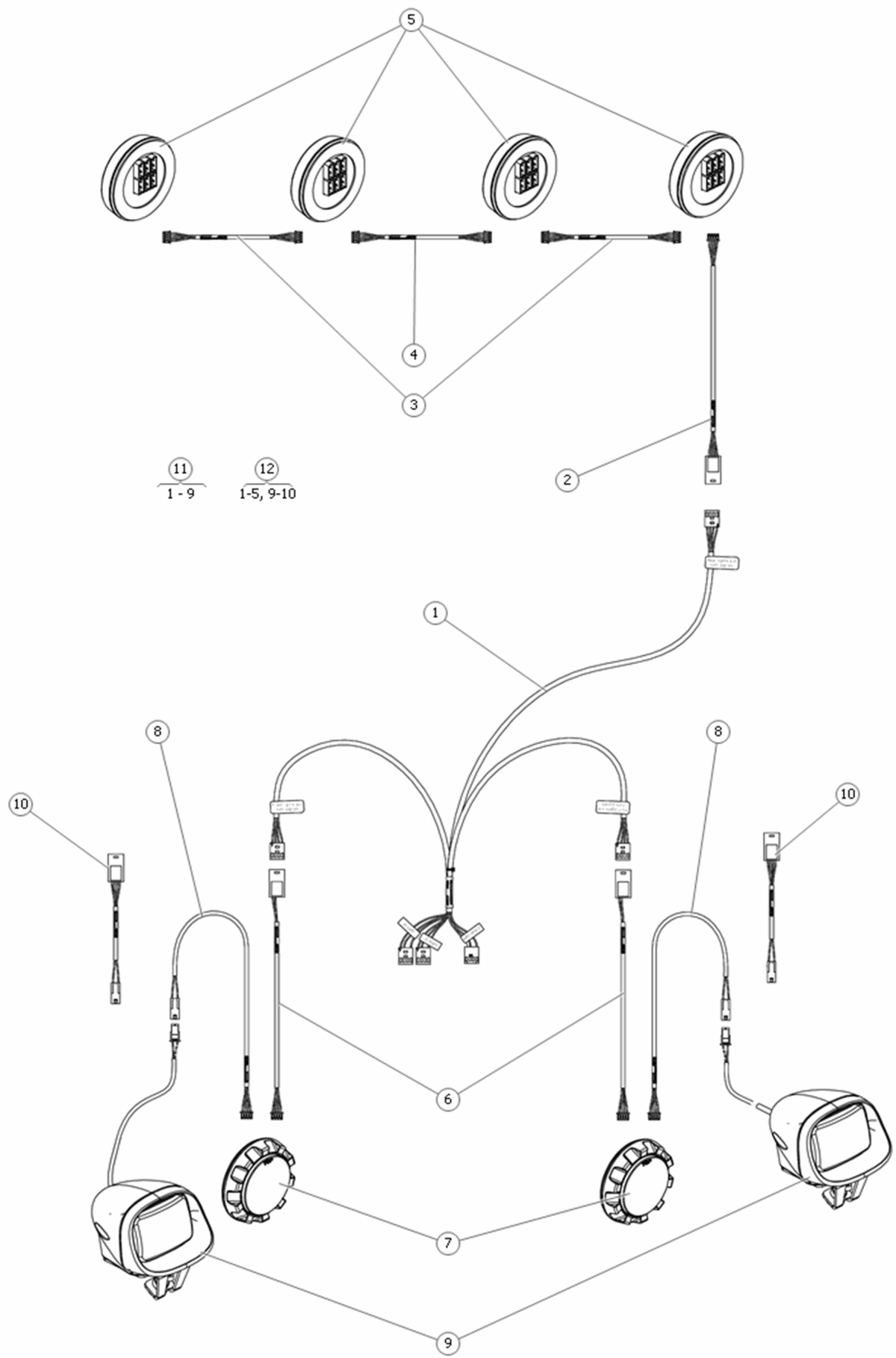
Pos	Qty	Stock Code	Description	Remark
1	1	1831116	SEAT ELEVATOR AP ELEVATOR	
2	1	1831286	SEAT ELEV MOTOR INCL PCB	
3	1	600238-99-0	Washer ISO 7089 6,4x12x1,6 Fe/Zn	
4	1	600194-99-0	Screw ISO 4762 M6x20 Fe/Zn	
5	1	614701	Timing belt	
6	1	1831287	PROTECTOR PLASTIC CLIP	
7	1	323230	Holder electronics	
8	1	601126-99-0	Screw ISO 4762 M5x6 Fe/Zn	
9	1	323497	Cable bracket	
10	1	600190-99-0	Screw ISO 4762 M5x14 Fe/Zn	
11	1	323498	Bracket	
12	1	600188-99-0	Screw ISO 4762 M5x8 Fe/Zn	
13	1	324122	Bow	
14	1	614690	Disc spring DIN 2093 9,2x18x0,7	
15	1	324193	Socket disc spring	
16	1	602397-99-0	Screw ISO 7380 M6x22 Fe/Zn	
17	1	324916	Socket disc spring	
18	1	614689	Disc spring DIN 2093 11,2x22,5x0,8	
19	1	1831009	Spring unit	
20	1	600238-99-0	Washer ISO 7089 6,4x12x1,6 Fe/Zn	
21	1	601675-99-0	Screw ISO 7380 M6x16 Fe/Zn	
22	1	324778	Frame kit	
23	1	324737	Frame lower	
24	1	323496	Bracket	
25	1	600190-99-0	Screw DIN 912 M5x14 Fe/Zn	
26	1	324393	Pinchguard Right lower	
27	1	324392	Pinchguard Left	
28	1	614811	Screw ISO 7380 M4x8 Fe/Zn	
29	1	324391	Pinchguard arm	
30	1	324176	Arm right/left	
31	1	324672	Cover	
32	1	614636	Slip washer 14/26x1,5 SBT	
33	1	324172	Washer	
34	1	600735-99-0	Screw ISO 10642 M6x25 Fe/Zn	
35	1	600229-99-0	Nut DIN 985 M10 Fe/Zn	
36	1	323335	Pin bolt	
37	1	325182	Carriage	
38	1	600196-99-0	Screw ISO 4762 M6x30 Fe/Zn	
39	1	1831283	Lock washer	
40	1	600227-99-0	Nut DIN 985 M6 Fe/Zn	
41	1	1831281	Actuator LA 28 compact	
42	1	323347	Bracket	
43	1	318381	Bearing	
44	1	600541-99-0	Screw ISO 10642 M6x16 Fe/Zn	
45	1	601708-99-0	Screw ISO 10642 M5x10 Fe/Zn	
49	1	600232-99-0	Nut ISO 4032 M6 Fe/Zn	
50	1	614715	Parallel pin	
51	1	1831550	Rubber block Ø18x7 M6x14 NBR 60SH	
52	1	600238-99-0	Washer ISO 7089 6,4x12x1,6 Fe/Zn	
53	1	600232-99-0	Nut ISO 4032 M6 Fe/Zn	
54	1	325212	Plat	
55	1	323201	Shaft	
56	1	324104	Lock plate	
57	1	600209-99-0	Screw ISO 10642 M5x20 Fe/Zn	
58	1	323210	Shaft	
59	1	323349	Socket L=13,5 Ø25/12,2	
60	1	1831284	Track wheel kit	
61	1	324208	Shaft Ø22 L=90,5	
62	1	324203	Roller	
63	1	614642	Slide bearing 18/20x6 SBT	
64	1	324200	Shaft	
65	1	614641	Slide bearing 18/20x10 SBT	
66	1	324202	Roller	
67	1	324199	Washer	
68	1	612393-99-0	Washer ISO 7093-1 8,4x24x2 Fe/Zn	
69	1	600276-99-0	Screw ISO 4762 M8x50 Fe/Zn	
70	1	1831398	Sticker Warning	
71	1	1831391	STICKER PINCH RISK	
72	1	324394	Cover	
73	1	1831371	APE tilt only	
74	1	1831372	APE Fixed	



Pos	Qty	Stock Code	Description	Remark
1	1	1830896	COVER KIT BLACK F5	
2	1	1831755	COVER REAR	
3	1	324503	STICKER Battery connections/Fuses	
4	1	325008	STICKER Battery connection	
5	1	602615-99-0	CABLE TIE HOLD. ACC19 A-C *	
6	1	324157	PLUG ELECTRONIC	
7	1	1831393	STICKER POWER SWITCH	
8	1	325062	RECLOSABLE FASTENER 25.4 ADHESIVE	
9	1	1831750	COVER SWINGARM	
10	1	1831389	STICKER BRAKE RELEASE COVER RIGHT	
11	1	325062	RECLOSABLE FASTENER 25.4 ADHESIVE	
12	1	1831388	STICKER BRAKE RELEASE COVER LEFT	
13	1	1831748	COVER SWINGARM	
14	1	613890-99-0	LOCK HANDLE M5X10 LOW	
15	1	1831756	COVER TOP	
16	1	1831751	COVER SWINGARM FENDER LEFT	
17	1	612857-99-0	WASHER 5,3x15x1 FZB ISO 7093-1 200HV	
18	1	600169-99-0	BOLT MC6S 5x12 fzb *	
19	1	1831752	COVER SWINGARM FENDER RIGHT	
20	1	1831749	COVER SWINGARM RIGHT	
21	1	325062	RECLOSABLE FASTENER 25.4 ADHESIVE	
22	1	1831747	COVER SWINGARM LEFT	
23	1	1830897	COVER Front F5 Corpus	
23	1	1830898	Cover Front F5 Corpus VS	
24	1	1830907	*ACCENT COLORS F5 SUNBURST ORANGE	
24	1	1831132	*ACCENT COLORS F5 GALACTIC GREEN	
24	1	1831133	*ACCENT COLORS F5 MIDNIGHT BLACK	
24	1	1831134	*ACCENT COLORS F5 OCEAN BLUE	
24	1	1831135	*ACCENT COLORS F5 PHANTOM GREY	
24	1	1831136	*ACCENT COLORS F5 POWER PINK	
24	1	1831137	*ACCENT COLORS F5 RADIANT RED	
24	1	1831138	*ACCENT COLORS F5 TITAN BLUE	
25	1	325032	COVER REAR F5 ACCENT DETAIL w. STICKER	
26	1	1828133	STICKER PERMOBIL STICKER	
27	1	325043	COVER SWINGARM F5 RIGHT/FRONT ACCENT DETAIL w. STICK...	
28	1	324895	DECAL F5 CHASSI RIGHT	
29	1	325042	COVER SWINGARM F5 LEFT/FRONT ACCENT DETAIL w. STICKER	
30	1	324892	DECAL F5 CHASSI LEFT	
31	1	324600	COVER REAR SWINGARM ACCENT DETAIL	
32	1	1831716	STICKER "CORPUS VS"	
32	1	1831717	STICKER "CORPUS"	



Pos	Qty	Stock Code	Description	Remark
1	1	1821539	R-net Power module 80A	
1	1	1822393	R-net Power module 120A	
1	1	1825774	R-net Power module 90A	
2	1	1830727	Cable charger connector OBC	
3	1	1830719	Cable battery	
4	1	1830726	Cable main fuse 63A	
5	1	1830720	Cable bus R-net	L=300mm
6	1	1822804	ESP-module	
7	1	1830721	Cable bus R-net	L=700mm
8	1	1830728	PCB box	
9	1	1821526	Cable bus R-net	L=2500mm
10	1	1822389	Ctrl panel JSM-L-sw R-net	
10	1	1822390	Ctrl panel JSM-L-sw-T R-net	
10	1	1825746	Ctrl panel CJSM-L-sw R-net	
10	1	1825758	Ctrl panel JSM-LED R-net	
10	1	1831273	Ctrl panel R-NET CJSM2	
11	1	602130-99-0	Battery 73 A gel, low	



Pos	Qty	Stock Code	Description	Remark
1	1	1830771	CABLE ICS ADAPTER LIGHT	
2	1	1830775	Adapter cable rear light	L=140mm
3	1	1830152	Jumper cable ICS	L=100mm
4	1	1830774	Jumper cable ICS	L=280mm
5	1	1830147	Rear lights & turn signals	Red reflector
6	1	1830773	Adapter cable front lights	
7	1	1830146	Front lights & turn signals	
8	1	1830772	Adapter cable front lights & turn signals	
9	1	1830760	Front lights	
10	1	1830776	Adapter cable front lights	L=280mm
11	1	1830761	Light kit led	
12	1	1830762	Light kit led	

Ordering information

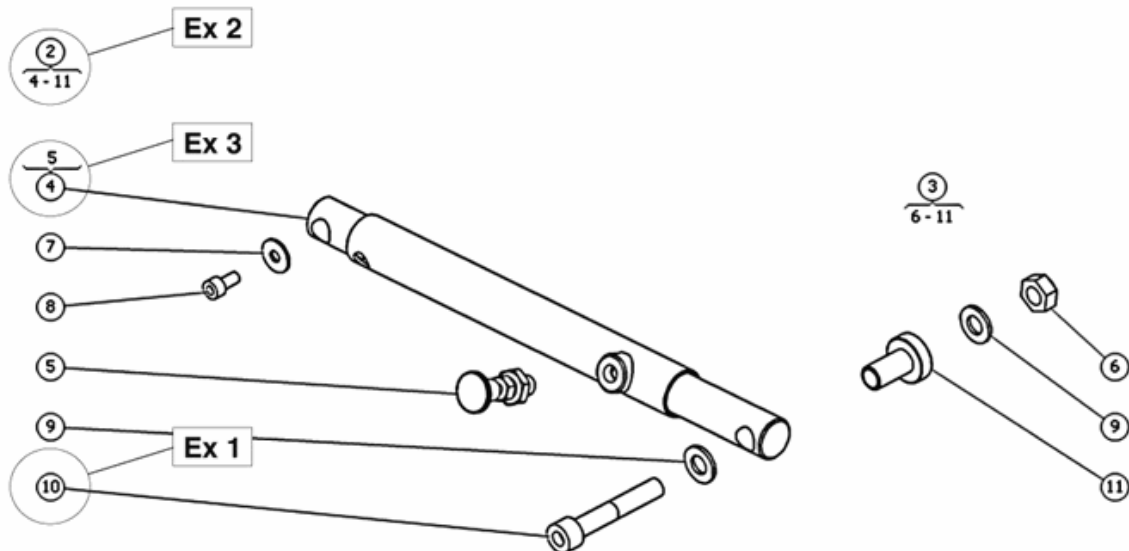
When you order spare parts, the following must always be specified:

- The product model (for example, power wheelchair C300).
- The description of the part. Always use the description used in this catalog.
- The entire part number.
- The quantity.

NB! In some cases, parts appear in the spare part catalog without a part number. This means that the part cannot be ordered from Permobil. We have, however, chosen to describe it for your information. Standard components such as screws, nuts, washers and similar parts can be purchased in an ordinary shop using the information in this catalog.

Parts

A part consists of one or more parts. If a part consists of several parts, a bracket in connection with the part's item bubble is used to show the parts included in the part in the exploded views. See examples 1, 2 and 3.



Example 1:

Position 10 refers to a single part, a screw.

Example 2:

Position 2 is a spare part consisting of the positions from 4 to 11.

Example 3:

Position 4 is an article that also includes position 5. In these cases the article or articles which referred to in the bracket, are pre-assembled on the main article (position 4).

Spare Parts Catalog

CONTACT PERMOBIL:

Permobil AB

Box 120

861 23 Timrå

Sverige

Tel: 060-59 59 00

Fax: 060-57 52 50

E-post: info@permobil.se

Permobil Inc. USA

300 Duke Drive

Lebanon, TN 37090

USA

Phone: 800-736-0925

Fax: 800-231-3256

Email: info@permobilusa.com

Permobil AS

Industriveien 16

Postboks 60

1483 Hagan Norge

Tlf. 815 30 077

Fax. 815 33 655

E-post: firmapost@permobil.no

Permobil Benelux BV

De Beitel 11

6466 GZ Kerkrade

Nederland

Tel: +31 (0)45 564 54 80

Fax: +31 (0)45 564 54 81

Email: info@permobil.nl

Notes

Lined area for notes, consisting of multiple horizontal dashed lines.



permobil
THE POWER OF MOBILITY